

DUST-TIGHT HYBRID SERIES



HYBRID T-BAR RELAYS ARE AVAILABLE FOR LOGIC CONTROL

THREE SCHEMATIC DIAGRAMS WITH THREE DIFFERENT DRIVERS are available:

- 1) D (DRIVER CURRENT SUPPLIED)** Designed to operate from a low current 24 Volt source and supplying +24 Volts will operate the relay.
- 2) D (TTL OR SW)** Designed to operate from a TTL Drive or Switch. A "Logic 1" or a voltage between +2.4 Volts and + 5.5 Volts will operate the relay. A "Logic 0" or any voltage less than 0.8 Volts will deactivate the circuit. It can also be operated from a switch or contact closure. An open contact or switch activates the circuit. A closure deactivates the circuit.
- 3) Z (INVERTED TTL)** Designed to operate from inverted TTL circuits. A "Logic 0" activates the circuit. A "Logic 1" or open circuit (open collector) deactivates the circuit.

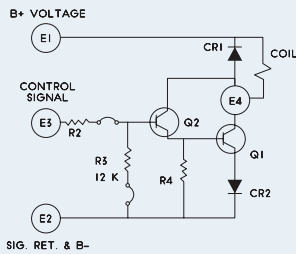
SPECIFICATIONS:

- **SEAL TYPE:** Dust-Tight
- **# OF POLES:** 12, 24, 36, 48 and 52 pole configurations.
- **COIL VOLTAGE:** 24 and 28 Volts DC
- **TYPE OF CONTACTS:** 800 Series (5 Amp) or 900 Series (1 Amp)
- **CONTACT FORM:** C



DRIVER SCHEMATIC DIAGRAMS

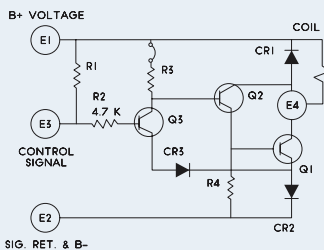
D (DRIVER CURRENT SUPPLIED)



SPECIFICATIONS

- COIL SUPPLY VOLTAGES (B+):**
24V ± 2VDC, 28V ± 2VDC, 48V ± 2VDC
- SUPPLY CURRENT (E1):**
255mA @ 24V, 233mA @ 28V, or
137mA @ 48V (Relay ON)
1 microamp @ 24V, 28V or 48V (Relay OFF)
- CONTROL SIGNAL INPUT (E3):**
B+ @ 2.2mA (Relay ON)
Open circuit voltage 0V (Relay OFF)
- OPERATING TEMPERATURE:** 0°C to 55°C
- CONTROL FUNCTION:** Contact Closure (to B+)
- ALL VALUES ARE NOMINAL***

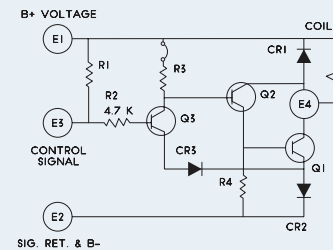
Q (TTL OR SW)



SPECIFICATIONS

- COIL SUPPLY VOLTAGES (B+):**
24V ± 2VDC, 28V ± 2VDC, 48V ± 2VDC
- SUPPLY CURRENT (E1):**
255mA @ 24V, 233mA @ 28V, or
137mA @ 48V (Relay ON)
1.2mA @ 24V, 28V or 48V (Relay OFF)
- CONTROL SIGNAL INPUT (E3):**
2.4V to 5.5VDC (Relay ON)
0V to 0.8VDV @ - 1.2mA Sink (Relay OFF)
Open circuit voltage @ 4.5V (Relay ON)
- OPERATING TEMPERATURE:** 0°C to 55°C
- CONTROL FUNCTION:** TTL Compatible
- ALL VALUES ARE NOMINAL***

Z (INVERTED TTL)



SPECIFICATIONS

- COIL SUPPLY VOLTAGES (B+):**
24V ± 2VDC, 28V ± 2VDC, 48V ± 2VDC
- SUPPLY CURRENT (E1):**
255mA @ 24V, 233mA @ 28V, or
137mA @ 48V (Relay ON)
3.0 mA @ 24V, 28V or 48V (Relay OFF)
- CONTROL SIGNAL INPUT (E3):**
0V to 0.8VDV @ - 0.7mA Sink (Relay ON)
2.4 to 5.5VDC (Relay OFF)
Open circuit voltage @ 4.5V (Relay OFF)
- OPERATING TEMPERATURE:** 0°C to 55°C
- CONTROL FUNCTION:** TTL Compatible
- ALL VALUES ARE NOMINAL***

* Based on coil rating of 6.6W.

ORDER INFORMATION

We offer reliable, electrical solutions to optimize productivity and maximize control of your energy systems. 50+ years of proven manufacturing in the U.S.A. sourcing local products for any size order with incredible prices. Experience the shortest lead time in procuring your electrical components. View our products online at tbarrelay.com, connect at info@occorp.com or call (847) 742-3566.

PART NO.: 7801-12C-28
T-BAR SERIES: 7801
NO. OF CONTACTS: 12
CONTACT FORM: C
COIL VOLTAGE: 28

PART NO.: 7901-12C-28
T-BAR SERIES: 7901
NO. OF CONTACTS: 12
CONTACT FORM: C
COIL VOLTAGE: 28