

# DUST-TIGHT HYBRID SERIES



## HYBRID T-BAR RELAYS ARE AVAILABLE FOR LOGIC CONTROL

THREE SCHEMATIC DIAGRAMS WITH THREE DIFFERENT DRIVERS are available:

- 1) D (DRIVER CURRENT SUPPLIED)** Designed to operate from a low current 24 Volt source and supplying +24 Volts will operate the relay.
- 2) D (TTL OR SW)** Designed to operate from a TTL Drive or Switch. A "Logic 1" or a voltage between +2.4 Volts and + 5.5 Volts will operate the relay. A "Logic 0" or any voltage less than 0.8 Volts will deactivate the circuit. It can also be operated from a switch or contact closure. An open contact or switch activates the circuit. A closure deactivates the circuit.
- 3) Z (INVERTED TTL)** Designed to operate from inverted TTL circuits. A "Logic 0" activates the circuit. A "Logic 1" or open circuit (open collector) deactivates the circuit.

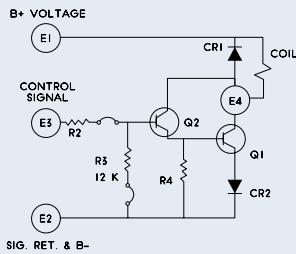
### SPECIFICATIONS:

- **SEAL TYPE:** Dust-Tight
- **# OF POLES:** 12, 24, 36, 48 and 52 pole configurations.
- **COIL VOLTAGE:** 24 and 28 Volts DC
- **TYPE OF CONTACTS:** 800 Series (5 Amp) or 900 Series (1 Amp)
- **CONTACT FORM:** C



## DRIVER SCHEMATIC DIAGRAMS

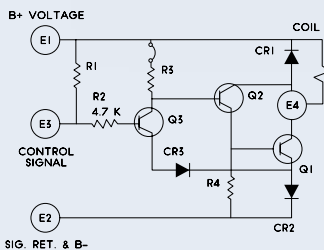
### D (DRIVER CURRENT SUPPLIED)



### SPECIFICATIONS

- COIL SUPPLY VOLTAGES (B+):** 24V ± 2VDC, 28V ± 2VDC, 48V ± 2VDC
- SUPPLY CURRENT (E1):** 255mA @ 24V, 233mA @ 28V, or 137mA @ 48V (Relay ON)  
1 microamp @ 24V, 28V or 48V (Relay OFF)
- CONTROL SIGNAL INPUT (E3):** B+ @ 2.2mA (Relay ON)  
Open circuit voltage 0V (Relay OFF)
- OPERATING TEMPERATURE:** 0°C to 55°C
- CONTROL FUNCTION:** Contact Closure (to B+)
- ALL VALUES ARE NOMINAL\***

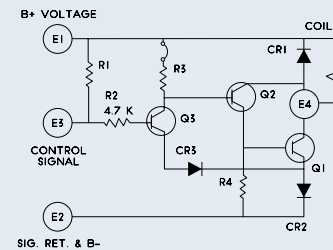
### Q (TTL OR SW)



### SPECIFICATIONS

- COIL SUPPLY VOLTAGES (B+):** 24V ± 2VDC, 28V ± 2VDC, 48V ± 2VDC
- SUPPLY CURRENT (E1):** 255mA @ 24V, 233mA @ 28V, or 137mA @ 48V (Relay ON)  
1.2mA @ 24V, 28V or 48V (Relay OFF)
- CONTROL SIGNAL INPUT (E3):** 2.4V to 5.5VDC (Relay ON)  
0V to 0.8VDV @ - 1.2mA Sink (Relay OFF)  
Open circuit voltage @ 4.5V (Relay ON)
- OPERATING TEMPERATURE:** 0°C to 55°C
- CONTROL FUNCTION:** TTL Compatible
- ALL VALUES ARE NOMINAL\***

### Z (INVERTED TTL)



### SPECIFICATIONS

- COIL SUPPLY VOLTAGES (B+):** 24V ± 2VDC, 28V ± 2VDC, 48V ± 2VDC
- SUPPLY CURRENT (E1):** 255mA @ 24V, 233mA @ 28V, or 137mA @ 48V (Relay ON)  
3.0 mA @ 24V, 28V or 48V (Relay OFF)
- CONTROL SIGNAL INPUT (E3):** 0V to 0.8VDV @ - 0.7mA Sink (Relay ON)  
2.4 to 5.5VDC (Relay OFF)  
Open circuit voltage @ 4.5V (Relay OFF)
- OPERATING TEMPERATURE:** 0°C to 55°C
- CONTROL FUNCTION:** TTL Compatible
- ALL VALUES ARE NOMINAL\***

## ORDER INFORMATION

We are a proven legacy-run product specialist partner ready to fulfill your sourcing requirements. Reach out to discuss how our professional team can be of service to you. Our full-service capabilities include design, development and manufacturing excellence for whatever your company procurement needs may be. Our customization options will put you ahead of the competition. Trust your company to 50+ years of providing quality, made in the U.S. products by our family-owned and operated business. Connect today at [info@occorp.com](mailto:info@occorp.com) or call (847) 742-3566.

**PART NO.:** 7801-12C-28  
**T-BAR SERIES:** 7801  
**NO. OF CONTACTS:** 12  
**CONTACT FORM:** C  
**COIL VOLTAGE:** 28

**PART NO.:** 7901-12C-28  
**T-BAR SERIES:** 7901  
**NO. OF CONTACTS:** 12  
**CONTACT FORM:** C  
**COIL VOLTAGE:** 28

\*Based on coil rating of 6.6W.